

RESORT VILLAS



MONTAGE
RESIDENCES

PUNTA MITA



Artist's Rendering

An aerial photograph of five modern, multi-story resort villas. The villas are arranged in a row, each featuring a prominent green wall and a rooftop garden. They are situated on a hillside covered in dense tropical vegetation. The sky above is a deep blue with soft, wispy clouds, suggesting a sunset or sunrise. The overall atmosphere is serene and luxurious.

SANCTUARY BY SEA

Poised over sand and sea, 62 Montage Resort Villas celebrate the allure of contemporary Mexican escape.

With 38 villas in phase one and 24 in phase two, this private 23-acre enclave takes its cues from the tropical canvas. Come home to refined indoor/outdoor living and stunning panoramas of the iconic Marietas Islands amid the Bay of Banderas.

A PRIVATE HAVEN

Revel in your own Residences Lounge and pool, along with exclusive access to the new Montage Punta Mita, Pendry Punta Mita and Club Punta Mita.



Montage Punta Mita

- 1 Arrival Porte Cochere
- 2 Hotel Manor (Conference & Dining)
- 3 Manor Event Lawn
- 4 Guestrooms
- 5 Guest Suites
- 6 Seven-Bedroom Villa
- 7 Family Pool
- 8 Family Pool Bar & Grill
- 9 Paintbox Children's Club

- 10 Beach Pool
- 11 Pool Bar & Grill
- 12 Beach Event Lawn
- 13 Spa Montage & Rooftop Pool
- 14 Farm Restaurant
- 15 Farm Event Lawn
- 16 Compass Sports
- 17 Outdoor Sports Courts

Montage Residences Punta Mita

- A Resort Villas - Building Type A
- B Resort Villas - Building Type B
- C Residences Lounge

LIVING ROOMS

Local craftsmanship and artful minimalism put ocean views center stage — from private terraces and pools to stirring seascapes.





Artist's Rendering



Artist's Rendering

KITCHENS

The heart of culinary artistry and convivial conversation, chef's kitchens are streamlined to flow seamlessly into open-air living and dining rooms.

With an intuitive design ethos that speaks to modern epicureans, light-filled kitchens feature clean lines, professional-grade appliances, invisible high-tech touches and artisanal finishes that inspire creativity.



BEDROOMS

Each Montage Resort Villa offers three to five bedrooms, plus flexible space for a home office, studio, gym or playroom and dedicated service quarters.

Meticulously designed to provide repose and retreat after a full day of adventuring, bedroom suites beckon you with natural stone floors, soaring ceilings and floor-to-ceiling windows that create living wall art.





Artist's Rendering



Artist's Rendering



Artist's Rendering

BATHROOMS & CLOSET

Sunlit bathroom suites offer spa-like serenity in harmony with nature, featuring rich earth tones, natural materials, luxury finishes and deep soaking tubs open to ocean breezes.

Sleek walk-in closets with custom built-ins and sit-down vanities offer abundant storage for extensive wardrobes and accessories that suit all seasons and occasions, along with room for beach and ocean essentials.



LEVEL 1-1

BUILDINGS 1 & 5 - TYPE A



3-BEDROOMS / 1 BATHS

5.157 SQFT = 507 M2 (Indoor/Outdoor)

- Covered (AC): 1,015 / 373
- Covered Terraces: 1,130 / 105
- Uncovered Areas: 342 / 29

BUILDING TYPE A ELEVATION



LEVEL 1 FLOORPLATE



LEVEL 1-2

BUILDINGS 1 & 5 - TYPE A



3-BEDROOMS / 1 BATHS

5.157 SQFT = 507 M2 (Indoor/Outdoor)

- Covered (AC): 1,015 / 373
- Covered Terraces: 1,130 / 105
- Uncovered Areas: 342 / 29

BUILDING TYPE A ELEVATION



LEVEL 1 FLOORPLATE



LEVEL 2-1 & LEVEL 3-1

BUILDINGS 1 & 5 - TYPE A

LEVEL 2-2 & LEVEL 3-2

BUILDINGS 1 & 5 - TYPE A



3-BEDROOMS / 1 BATHS

5,131 SQFT - 477 M2 (Indoor/Outdoor)

- Covered (AC): 1,015 / 373
- Covered Terraces: 1,119 / 104

BUILDING TYPE A ELEVATION



LEVEL 2 & 3 FLOORPLATE



3-BEDROOMS / 1 BATHS

5,131 SQFT - 477 M2 (Indoor/Outdoor)

- Covered (AC): 1,015 / 373
- Covered Terraces: 1,119 / 104

BUILDING TYPE A ELEVATION



LEVEL 2 & 3 FLOORPLATE



PENTHOUSE

BUILDINGS 1 & 5 - TYPE A

5 BEDROOMS / 6 BATHS

9,354 SQFT - 069,342 (Indoor/Outdoor)

- Covered (AC): 6,555 - 609
- Covered Terraces: 2,000 - 249
- Pools & Uncovered: 118 - 11

BUILDING TYPE A ELEVATION



LEVEL 1-1

BUILDINGS 2, 3 & 4 - TYPE B



1 BEDROOMS / 5 BATHS

6,222 SQFT / 578 M2 (Indoor/Outdoor)

- Covered (AC): 1,618 / 129
- Covered Terraces: 1,292 / 120
- Uncovered Areas: 342 / 29

BUILDING TYPE B ELEVATION

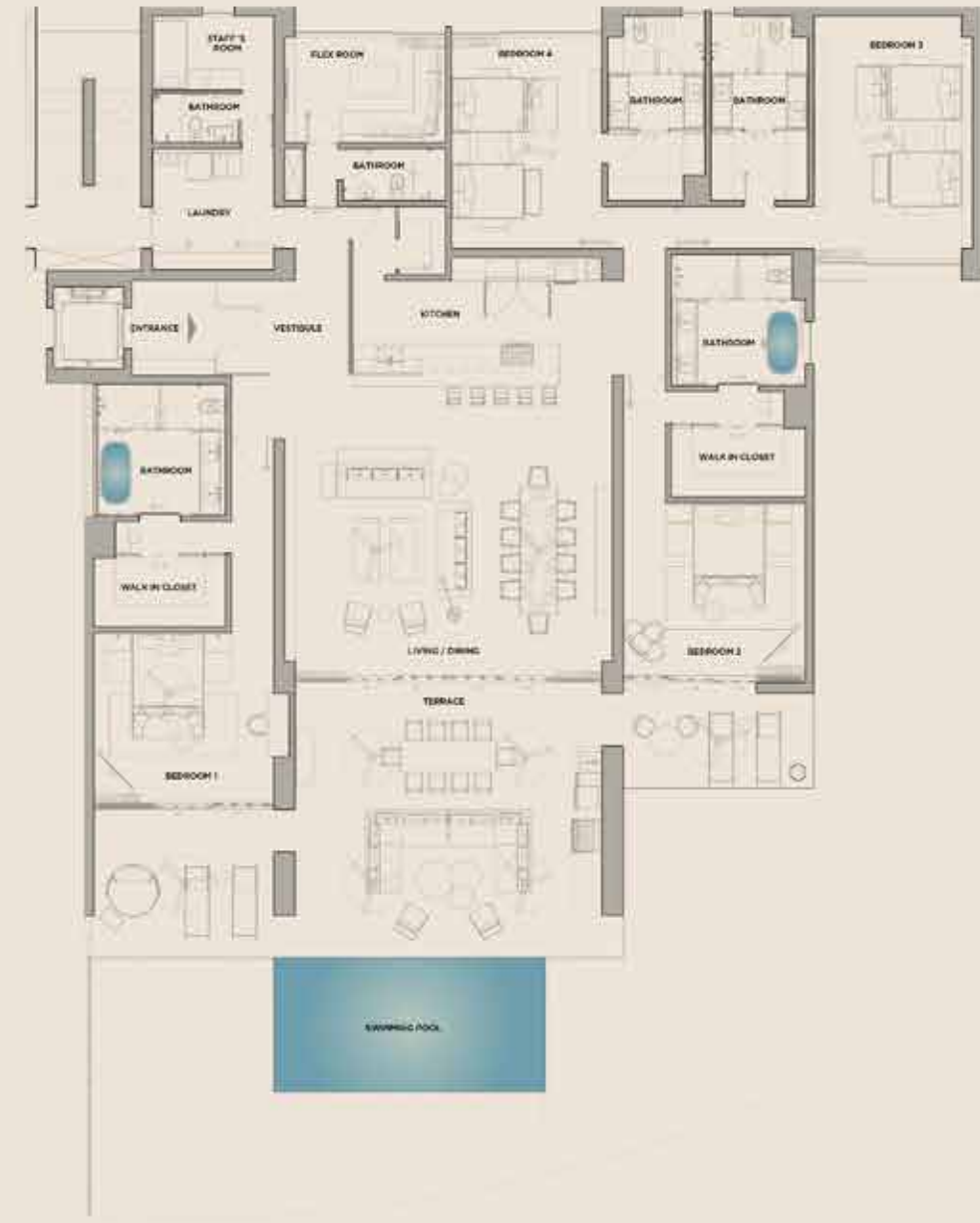


LEVEL 1 FLOORPLATE



LEVEL 1-2

BUILDINGS 2, 3 & 4 - TYPE B



1 BEDROOMS / 5 BATHS

6,222 SQFT / 578 M2 (Indoor/Outdoor)

- Covered (AC): 1,618 / 129
- Covered Terraces: 1,292 / 120
- Uncovered Areas: 342 / 29

BUILDING TYPE B ELEVATION



LEVEL 1 FLOORPLATE



LEVEL 2-1 & LEVEL 3-1

BUILDINGS 2, 3 & 4 - TYPE B



LEVEL 2-2 & LEVEL 3-2

BUILDINGS 2, 3 & 4 - TYPE B



1 BEDROOMS / 5 BATHS

5,909 SQFT / 549 M2 (Indoor/Outdoor)

- Covered (AC): 1,618 / 129
- Covered Terraces: 1,292 / 120

BUILDING TYPE B ELEVATION



LEVEL 2 & 3 FLOORPLATE



1 BEDROOMS / 5 BATHS

5,909 SQFT / 549 M2 (Indoor/Outdoor)

- Covered (AC): 1,618 / 129
- Covered Terraces: 1,292 / 120

BUILDING TYPE B ELEVATION



LEVEL 2 & 3 FLOORPLATE



PENTHOUSE 1

BUILDINGS 2, 3 & 4 - TYPE B

1 BEDROOMS / 5 BATHS

5,909 SQFT / 549 M2 (Indoor/Outdoor)

- Covered (AC): 4,648 / 429
- Covered Terraces: 1,292 / 120

BUILDING TYPE B ELEVATION



PENTHOUSE LEVEL FLOORPLATE



MAIN LEVEL

PENTHOUSE 2

BUILDINGS 2, 3 & 4 - TYPE B

1 BEDROOMS: 5 BATHS

5,909 SQFT / 549 M² (Indoor/Outdoor)

- Covered (AC): 4,618 / 429
- Covered Terraces: 1,292 / 120

BUILDING TYPE B ELEVATION



PENTHOUSE LEVEL FLOORPLATE





**BUILDING 1 - TYPE A
SOLD OUT**



BUILDING 2 - TYPE B



BUILDING 3 - TYPE B



BUILDING 4 - TYPE B



BUILDING 5 - TYPE A



RESORT VILLAS	AVAILABLE	RESIDENCE #	NEW PRICE	M ²
BUILDING 1 TYPE A	SOLD OUT	SOLD OUT	SOLD OUT	
BUILDING 2 TYPE B	1	211	\$5,450,000	578
	1	221	\$5,150,000	549
	1	231	\$5,800,000	549
	1	PH2-1	\$6,600,000	549
	1	PH2-2	\$6,600,000	549
	5			
BUILDING 3 TYPE B	1	331	\$5,895,000	549
	1	PH 3-1	\$6,600,000	549
	1	312	\$5,600,000	578
	1	PH3-2	\$6,600,000	549
	4			
	1	411	\$5,600,000	578
BUILDING 4 TYPE B	1	421	\$5,300,000	549
	1	431	\$5,995,000	549
	1	PH4-1	\$6,600,000	549
	1	412	\$5,600,000	578
	1	422	\$5,300,000	549
	1	PH4-2	\$6,600,000	549
	7			
BUILDING 5 TYPE A	1	511	\$4,950,000	507
	1	531	\$5,250,000	477
	1	512	\$4,950,000	507
	1	PH5	\$9,650,000	869
	4			
RESIDENCES AVAILABLE	20			

PROGRESSIVE PAYMENT PLAN

- 10% Deposit upon reservation
- 30% due at execution of definitive agreement
- 30% due at rooftop completion
- 30% due upon delivery notice

ⓘ This is not intended to be an offer, or a solicitation of offers, to buy real estate or any other tangible asset in Punta Mita by residents of any jurisdiction where prohibited by law or where the project is not registered for sale as required by applicable law. Preliminary project is subject to change without notice. Images are for informational purposes only and do not represent any guarantee of the final appearance or completion of the project and correspond only to the project's first phase. Planned development, including but not limited to pricing, specifications and amenities, is subject to change or modifications without further notice. All renderings are intended to be graphic representations for illustrative purposes only, and the final finishing and design plans are subject to change. The names of Punta Mita and DINE, as well as their logos, are registered trademarks and may not be used by third parties without prior written notice and consent of their owners.





MONTAGE
RESIDENCES

PUNTA MITA



RIVIERA PARTNERS
realty

AV. DE LAS REDES S/N, PUNTA DE MITA, NAYARIT 63734, MÉXICO
TEL : 329.291.5442 / 329.291.5402
INFO@RIVIERAPARTNERSREALTY.COM • WWW.RIVIERAPARTNERSREALTY.COM

