



BAHIA SIGNATURE ESTATE 4







**BAHIA
SIGNATURE
ESTATES**

**50,943 sq ft
4,732.76 m²**

\$9,350,000 USD

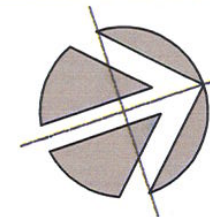
Bahia Signature Estates, offering a rare opportunity to own breathtaking beachfront property in this world-renowned resort community. These generously-sized beachfront home sites stretching along the Bay of Banderas shoreline now available for sale. These extraordinary home sites' will be accessed by a private drive, full of lush landscaping and will be a pleasant beach walk to the future planned resort and adjacent to Ranchos Beach Club. Additional exclusivity awaits, as owners and their guests of these spectacular homesites will have full access to the future planned resort amenities.



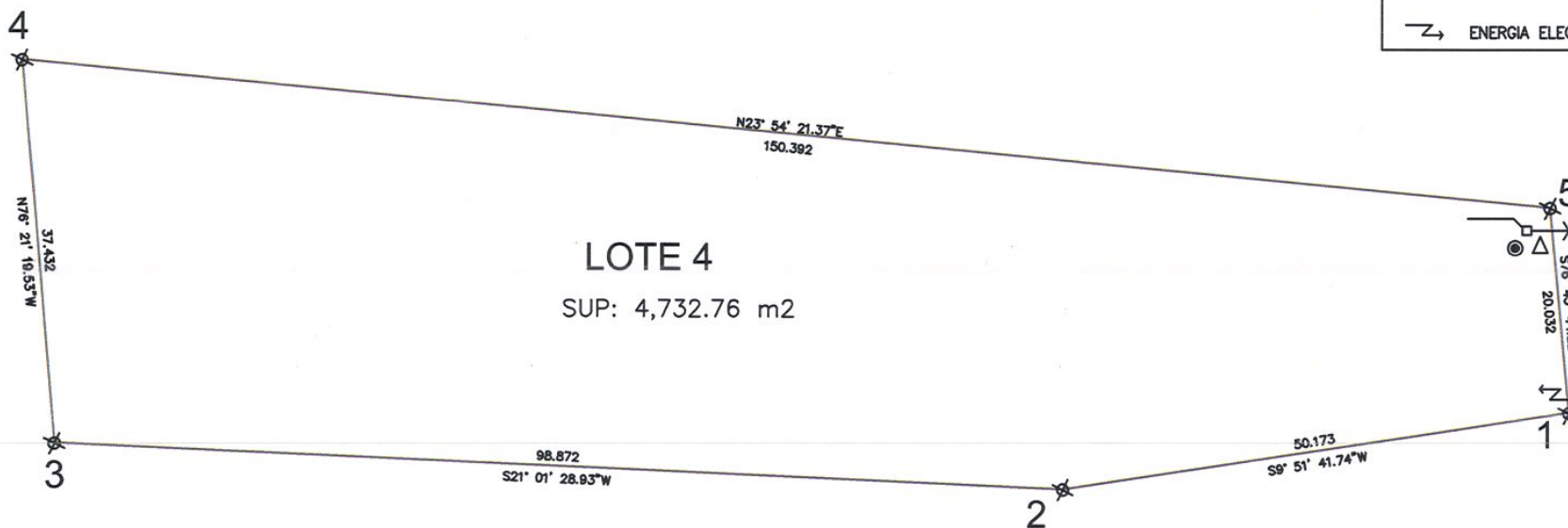
POLIGONAL

CUADRO DE COORDENADAS		
PUNTO	Y	X
1	5532.3208	3824.7603
2	5482.8888	3816.1671
3	5390.5994	3780.6949
4	5399.4295	3744.3195
5	5536.9193	3805.2636

CUADRO DE RUMBOS Y DISTANCIAS		
LINEA	DISTANCIA	RUMBO/DELTA
L1	20.032	S76° 43' 44.22"E
L2	150.392	N23° 54' 21.37"E
L3	37.432	N76° 21' 19.53"W
L4	98.872	S21° 01' 28.93"W
L5	50.173	S9° 51' 41.74"W



SIMBOLOGIA	
△	TELEFONO
⊙	AGUA POTABLE
← □ →	DRENAJE SANITARIO
↗	ENERGIA ELECTRICA



PROYECTO: "LOTES H5B1-A BAHIA SIGNATURE ESTATES" CONTENIDO: "LOTE 4" PLANTA LINDEROS ACOMETIDAS	SUP. m2 4,732.76 m2	NCM=12.50	
	ACOMETIDAS DE INSTALACIONES		
	AGUA 3/4"	ENERGIA ELECTRICA 50 KVAS	TELEFONO
FECHA: MAYO 2018	cos: 30% 1,419.82 m2	cus: 35% 1,656.46 m2	NIVELES MAXIMOS: 2

RANCHOS BEACH CLUB

BAHIA SIGNATURE
ESTATE LOT 4

Montage

RANCHOS ESTATES



AV. DE LAS REDES S/N, PUNTA DE MITA, NAYARIT 63734, MÉXICO
TEL : 329.291.5442 / 329.291.5402
INFO@RIVIERAPARTNERSREALTY.COM • WWW.RIVIERAPARTNERSREALTY.COM

