



# Susurros del Corazón

AUBERGE RESORTS COLLECTION

PUNTA DE MITA, MEXICO

VILLA PACIFICO  
Presidential Suite







**Villa Pacifico, the 'Presidential Villa' at Susurros del Corazón.**

**Villa Pacifico** is a large single family branded home compound woven seamlessly into the luxuriant cliff high above Banderas Bay, with easy and direct walking access to Susurros pristine sandy beach. The perfect beach for a walk, beach activities, and the warm Pacific ocean to swim and enjoy a wide variety of ocean activities. From Villa Pacifico on enjoys unique uninterrupted beach and ocean views, looking along the sprawling deep sandy beach, and down the line of the breaking surf waves, a one-off opportunity, and unique perspective. Villa Pacifico enjoys 7 bedrooms, each with en-suite bathrooms, a gym, spa with cold plunge and sauna. This breathtaking auberge branded residence integrates indoor and outdoor with nature's smooth, warm, tropical seamlessly. The large, expansive exterior terraces, with oversized infinity swimming pool, and a large elevated jacuzzi. With a fire pit and surrounding seating, covered and uncovered terraces, a covered full bar, with custom pizza oven, from where sunsets are unique and breathtaking every evening. Vantage points are many and varied from two levels of terraces, embracing the tropical climate and allowing for seamless indoor-outdoor living in elegance and with world-class Auberge service. At Villa Pacifico, life is enjoyed in exuberant luxurious comfort, with the incredible Auberge service, and in perfect harmony with this paradisiacal location.



# VILLA PACIFICO

## Presidential Villa

- 7 luxurious bedrooms, each with its private ensuite bathroom.
  - 2 additional powder rooms / half bathrooms.
  - Accessibility to all of the resort's world class amenities.
- Uninterrupted cliffside views of the entire Bay of Banderas with private and direct sandy beach access.
  - Large infinity pool, fire pit, and large outdoor jacuzzi all with spectacular sandy beach and expansive ocean views.
    - Private fitness studio with gym equipment. Full spa with sauna, steam room and cold plunge bath.
  - Game room featuring comfortable sitting area, game tables, pool table, foosball table, shuffleboard bar and large screen TV.
- Spacious private indoor and outdoor living spaces, expansive covered and uncovered terraces. BBQ area with large covered bar with large screen tv to enjoy all the games outside undercover although outside with spectacular views.
  - World class high-end luxurious finished and furniture throughout the property.
  - High-end appliances and gourmet kitchen
- Private entrance driveway and courtyard with covered cart parking for two carts or motorized vehicles, unique at Susurros del Corazón.

**LOT AREA** = 21,188 sq ft - 1,968.50 m2

**TOTAL CONSTRUCTION AREA** = 29,155 sq ft - 2,708.6 m2

**AC AREA** = 9,936 sq ft - 923.1 m2



**Susurros del Corazón**  
 AUBERGE RESORTS COLLECTION  
 PUNTA DE MITA, MEXICO

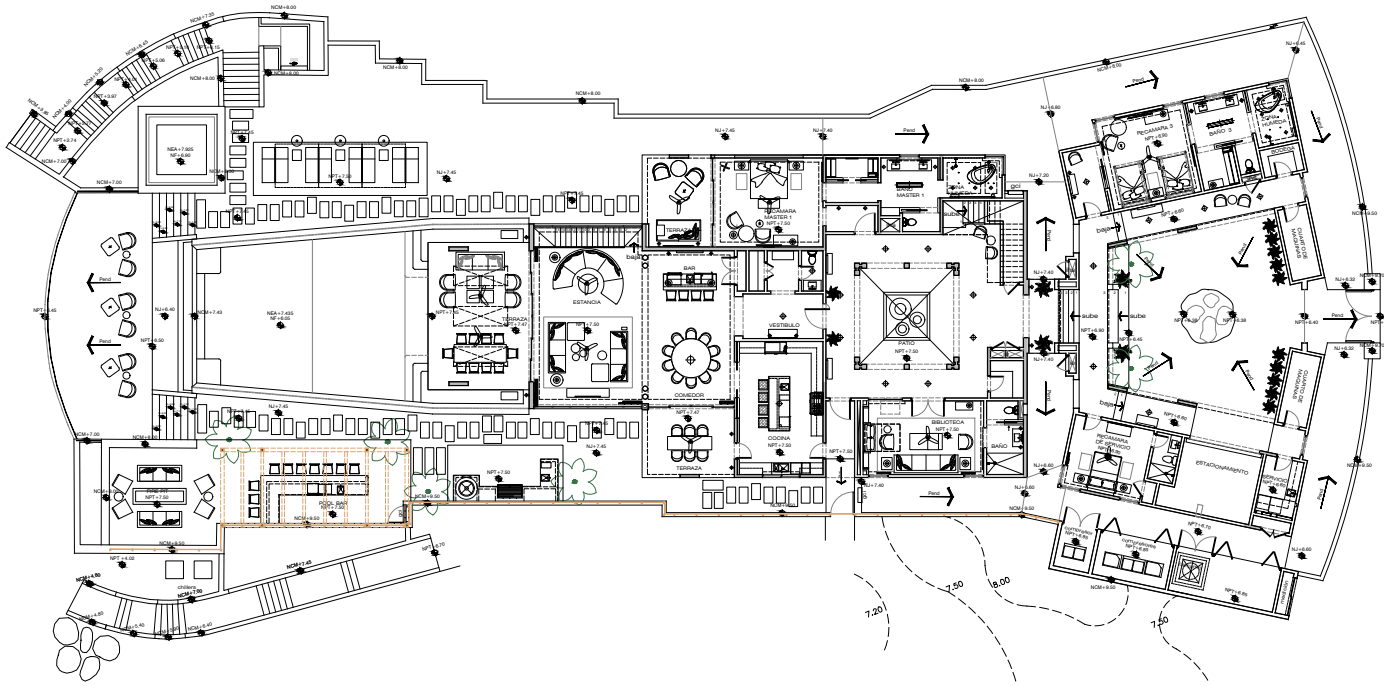
**GLAZIER LE  
 ARCHITECTS**

**PAUL DUESING PARTNERS**  
 LEISURE & LIFESTYLE DESIGN

**SIMBOLOGIA**

- ÁREAS CON MEDIDA EN METROS
- ÁREAS SIN MEDIR
- ÁREAS DE INTERÉS DE CONSUMIDORES
- ÁREAS DE INTERÉS DE CONSUMIDORES
- ÁREAS DE INTERÉS DE CONSUMIDORES

ÁREAS	AREA	AREA
INTERIORES A.C.	213.12	4630.00
TERRAZA ALBERGUE	272.82	2028.00
TERRAZA MANUABARRIA	348.00	1024.44
TERRAZA DE LA CANTINA	222.800	2182.51
TOTAL	856.74	10666.95



**PLANTA ARQUITECTÓNICA DE CONJUNTO**  
 ESCALA 1:125

PROYECTO: INE. GONZALO ROMERO DAVILA  
 CED. PROFESIONAL FEDERAL 1315624

DISEÑO: DISEÑO PROFESIONAL:  
 ING. EDUARDO ESTRADA AGUILAR  
 CED. PROFESIONAL FEDERAL 2358206  
 DFC550-2019

PROYECTO EJECUTIVO:  
 ARQ. YOLANDA EDITH MONTES ÁVILA  
 CED. PROFESIONAL FEDERAL 4668897

PROYECTO:	FECHA:	ESCALA:	HOJA:
ARQ. YMA	9-DIC-20	1:125	+7.50 +8.50

PROYECTO: **VILLAS**

CONTENIDO: **PLANTA ARQUITECTÓNICA DE CONJUNTO**

PROYECTO: **ARQUITECTÓNICO**

ESPESOR: 30MM / 12MM

**PA A99**



Susurros del Corazón

AUBERGE RESORTS COLLECTION  
PUNTA DE MITA, MÉXICO

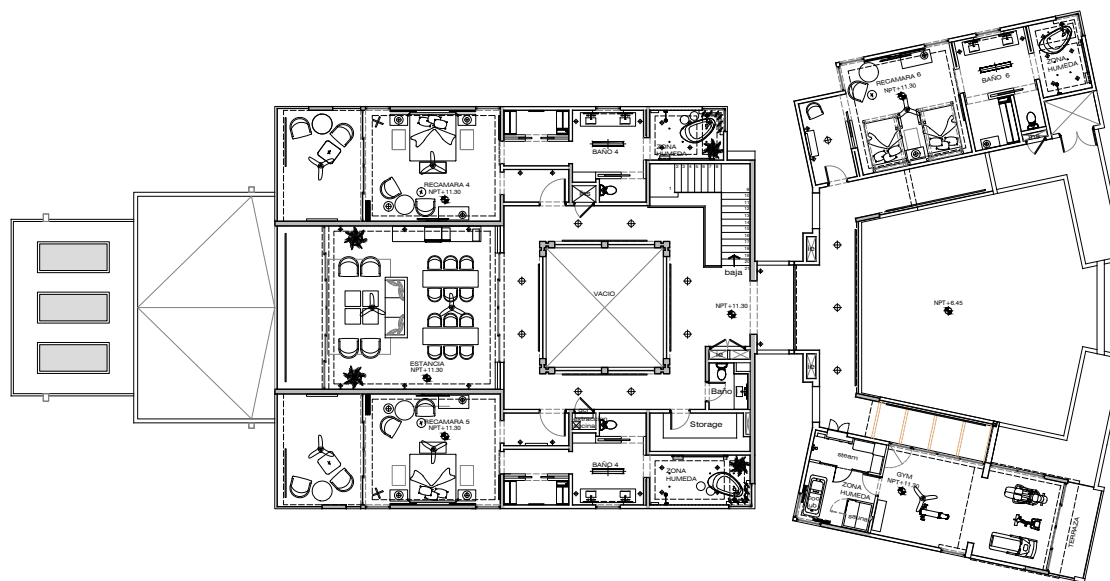
GLAZIER LE  
ARCHITECTS

PAUL DUESING PARTNERS  
LEISURE & LIFESTYLE DESIGN

SIMBOLOGIA

- TIPO DE MUEBLA EN METROS
- MUR DE CERRAMIENTO
- MUR DE TIPO PARED VENTILACIONADA
- MUR DE TIPO PARED AGUAFRÍO CON SUABE ESTRUCTURAL

AREAS	RF	SG RF
INTERIOR AC	344.43	3707.41
TERRAZA CUBIERTA	186.67	2006.29
TERRAZA SEMICUBIERTA	4.16	44.77
TERRAZA DESCUBIERTA	7.12	76.63
CUBERICA	0.00	0.00



PLANTA ARQUITECTÓNICA NIVEL 1  
ESCALA 1:100

PROYECTO: ING. GONZALO ROMERO DAVILA  
CED. PROFESIONAL FEDERAL: 1815524

PROYECTO PROFESIONAL: ING. EDUARDO ESTRADA AGUILAR  
CED. PROFESIONAL FEDERAL: 2098608  
DFO-20-2019

PROYECTO LEGISLATIVO: ARQ. YOLANDA EDITH MONTES ÁVILA  
CED. PROFESIONAL FEDERAL: 4668697

FECHA DE IMPRIMIR	FECHA DE OBRAS	ESCALA DE OBRAS	NIVEL DE OBRAS
ARQ. YMA	16-ENE-20	1:100	+11.30

ÁREA DE PROYECTO: VILLAS

CONTENIDO: PLANTA ARQUITECTÓNICA NIVEL 2

PROYECTO: ARQUITECTÓNICO

PROYECTO: PA A102



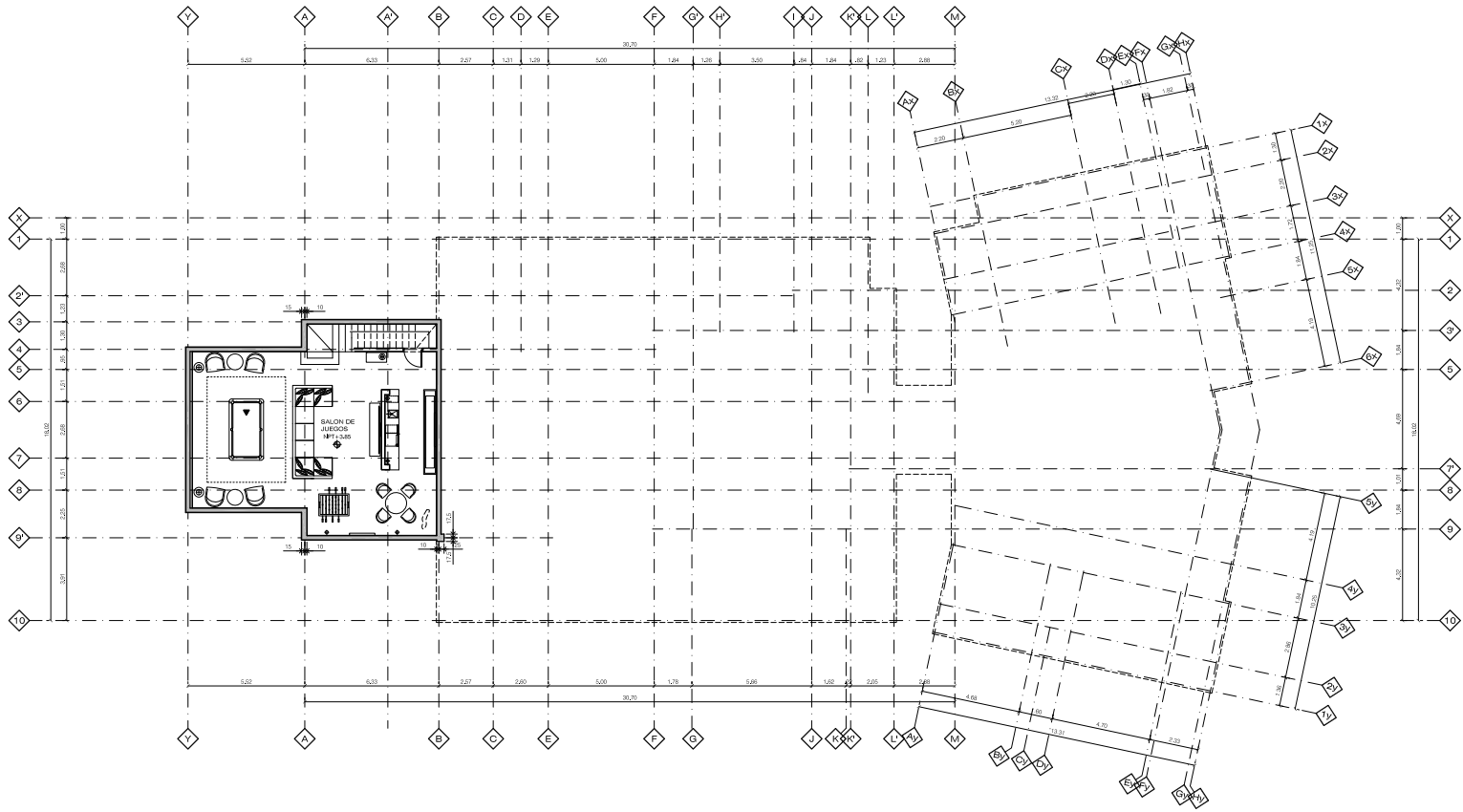
**Susurros del Corazón**  
 AUBERGE RESORTS COLLECTION  
 PUNTA DE MITA, MEXICO

**GLAZIERLE ARCHITECTS**

**PAUL DUESING PARTNERS**  
 TELSEBE & LIFESTYLE DESIGN

**SIMBOLOGIA**

- MODO DE LOS ELEMENTOS
- MODO DE LOS ELEMENTOS
- MODO DE LOS ELEMENTOS
- MODO DE LOS ELEMENTOS



**PLANTA ARQUITECTÓNICA SOTANO**  
 ESCALA 1:100

<b>PROYECTANTE</b>			
ING. GONZALO ROMERO DAVILA CEDI, PROFESIONAL FEDERAL 1519564			
<b>COORDINADOR GENERAL</b>			
ING. EDUARDO ESTRADA AGUILAR CEDI, PROFESIONAL FEDERAL 2369306 CRUCES-2018			
<b>PROYECTO EJECUTIVO</b>			
ARQ. YOLANDA EDITH MONTES ÁVILA CEDI, PROFESIONAL FEDERAL 4005097			
<b>CLIENTE</b>	<b>FECHA DISEÑO</b>	<b>ESCALA / SEALE</b>	<b>N.º DE PLANOS</b>
ARG. YMA	27-DIC-19	1:100	+3.85
<b>PROYECTO</b>			
<b>VILLAS</b>			
<b>CONTENIDO</b>			
PLANTA ARQUITECTÓNICA SOTANO			
<b>TÍTULO</b>			
ARQUITECTONICO			
<b>CLASIFICACIÓN</b>			
PA A100			

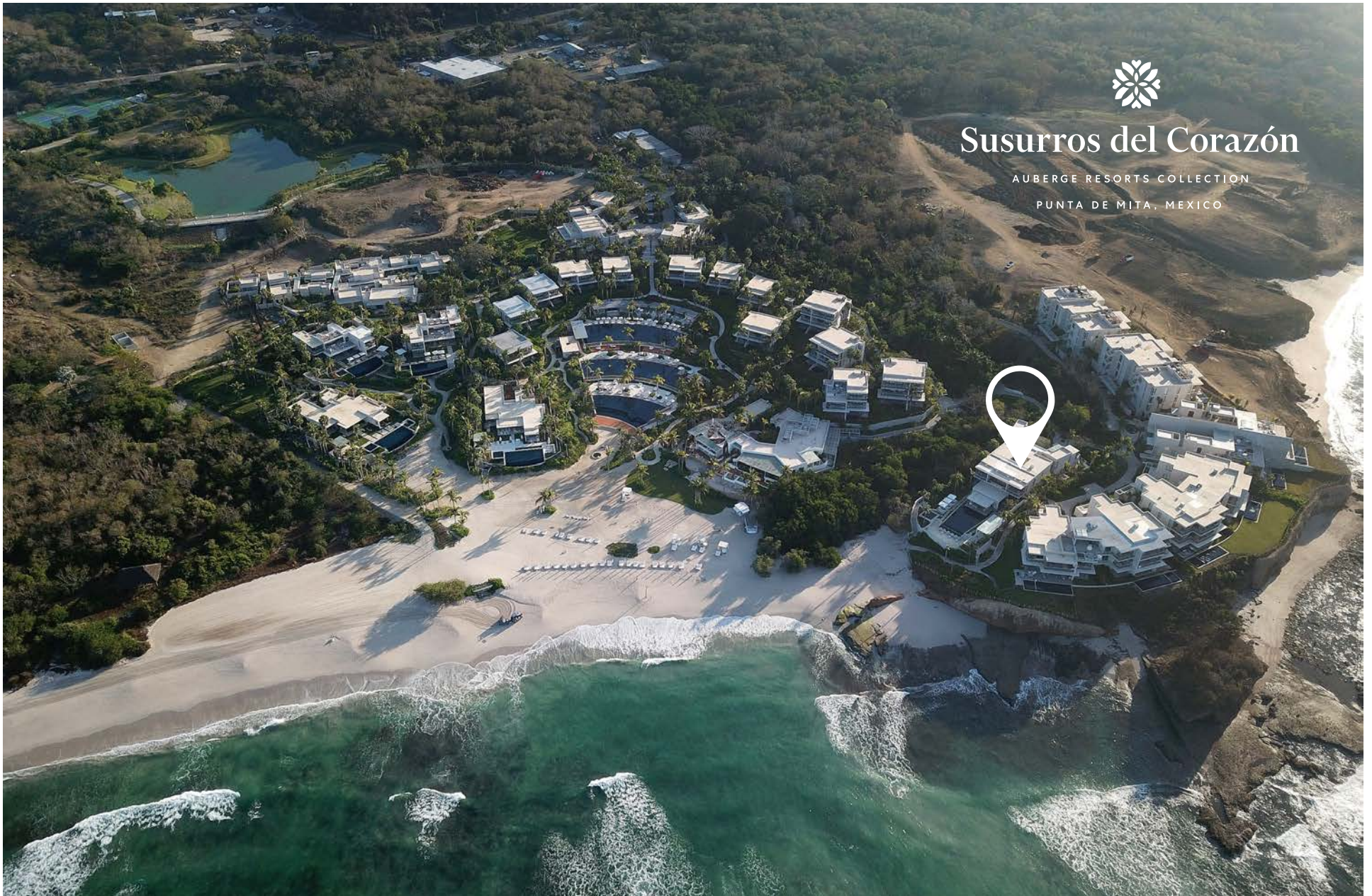




# Susurros del Corazón

AUBERGE RESORTS COLLECTION

PUNTA DE MITA, MEXICO

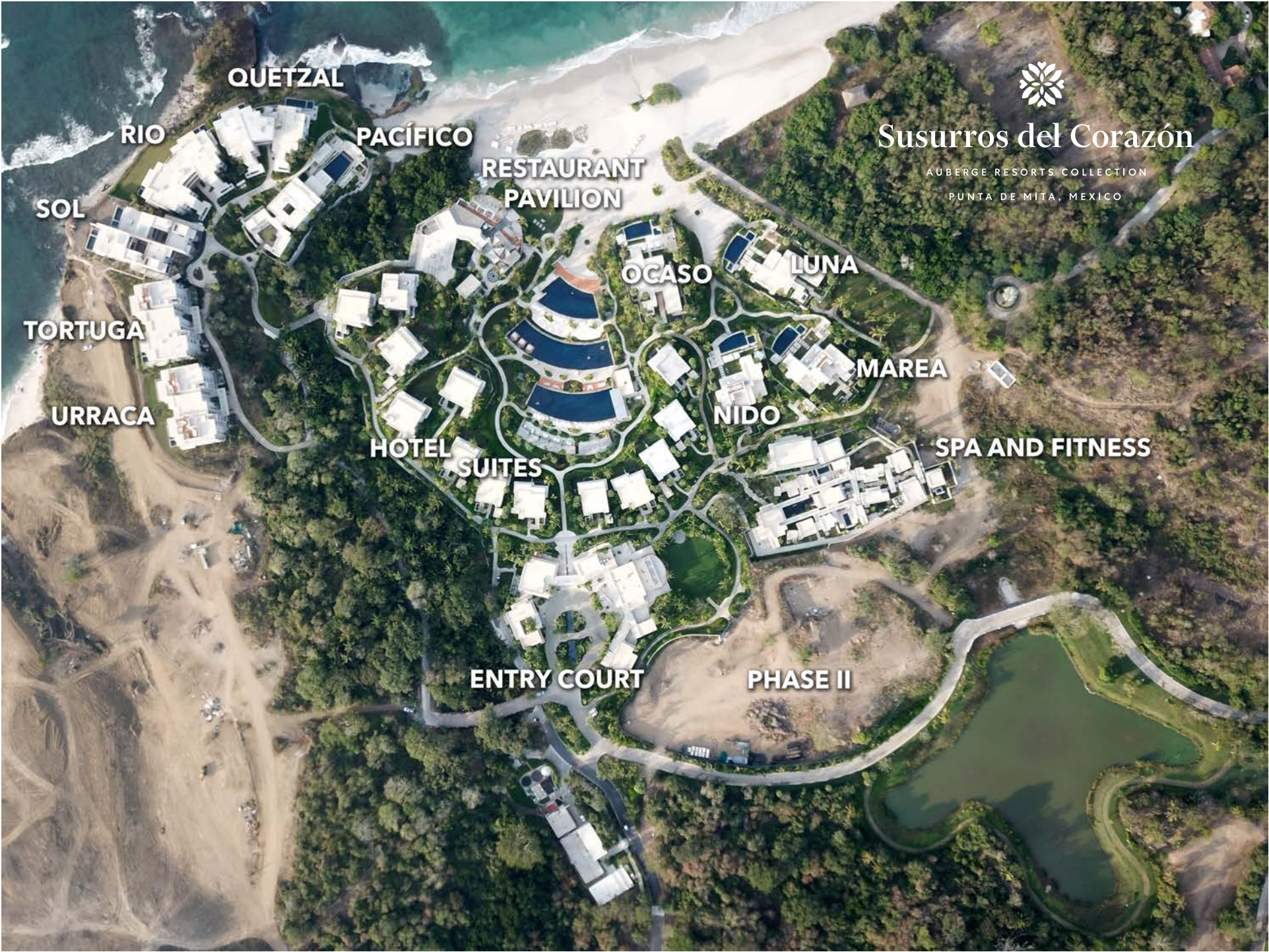




# Susurros del Corazón

AUBERGE RESORTS COLLECTION  
PUNTA DE MITA, MEXICO





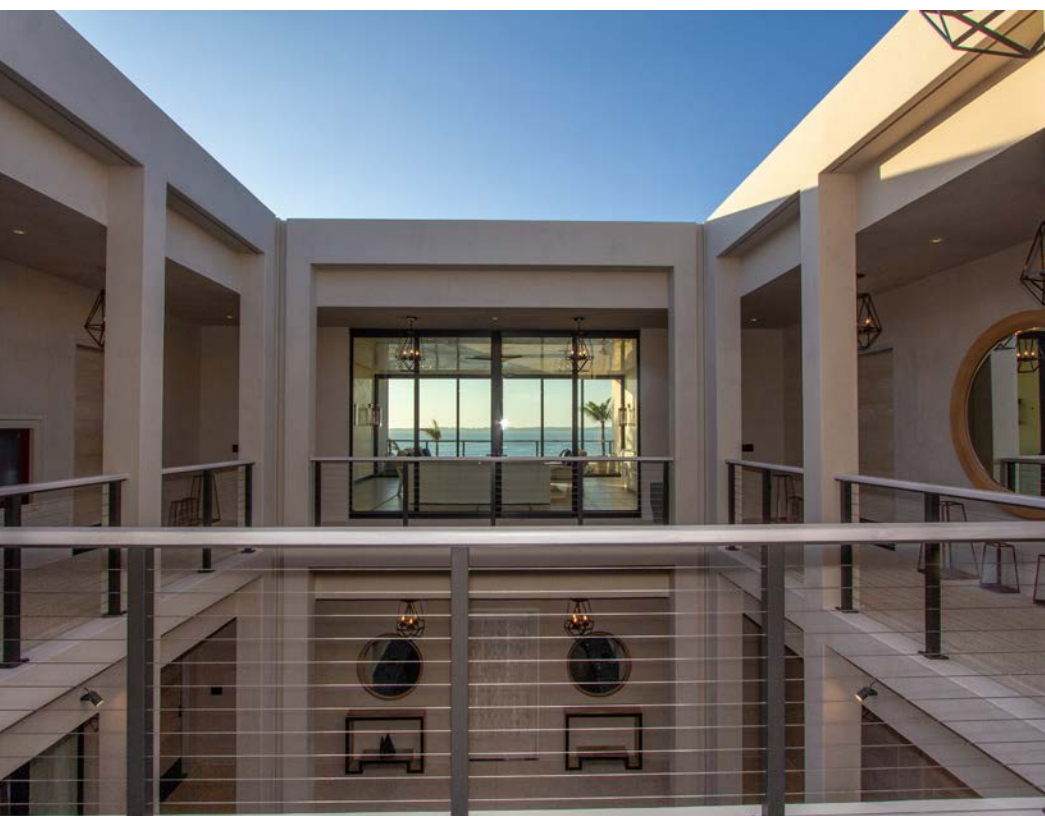
# Susurros del Corazón

AUBERGE RESORTS COLLECTION

PUNTA DE MITA, MEXICO





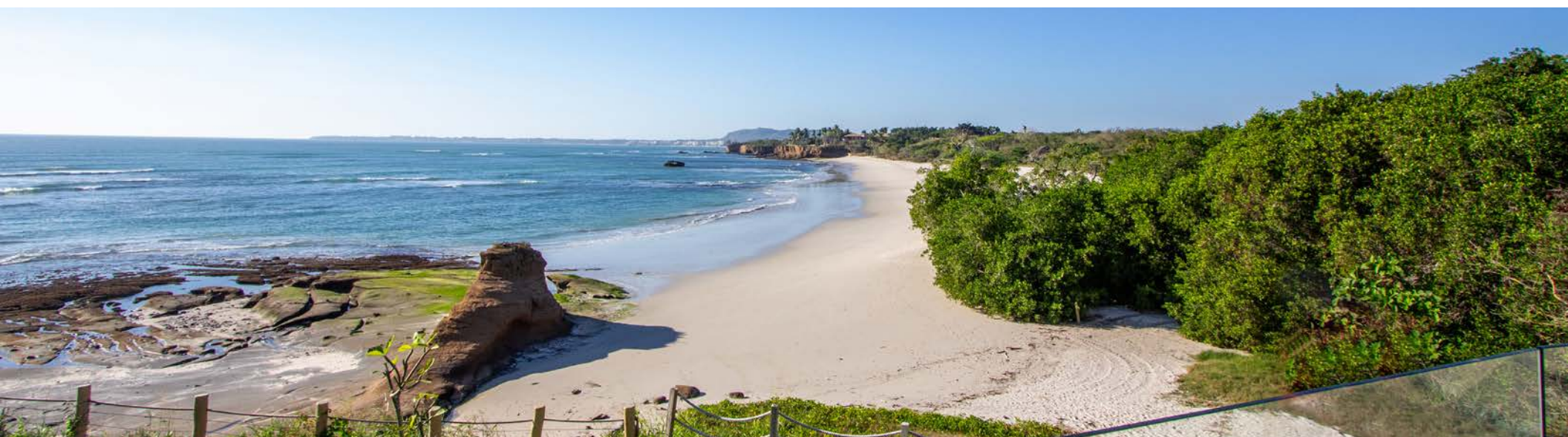




# Susurros del Corazón

AUBERGE RESORTS COLLECTION

PUNTA DE MITA, MEXICO



AV. DE LAS REDES S/N, PUNTA DE MITA, NAYARIT 63734, MÉXICO  
TEL : 329.291.5442 / 329.291.5402  
INFO@RIVIERAPARTNERSREALTY.COM • WWW.RIVIERAPARTNERSREALTY.COM

