

Zeight

BAHÍA GOLF RESIDENCES



RIVIERA PARTNERS
realty





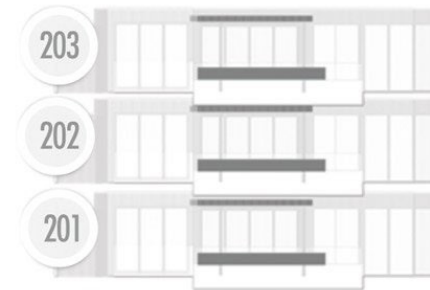
7 Eight Bahia Golf Residences

Overlooking the 7th & 8th fairways of Jack Nicklaus's Signature Bahia Golf Course, Punta Mita is proud to present its latest collection of exclusive Golf residences. While enjoying the expansive golf views 7 Eight Bahia Golf Residences homeowners can comfortably stroll to Punta Mita's Pacifico Beach Club. Form part of a unique Golfing community of Four 4-Story Buildings with four bedrooms and spacious entertaining, terrace areas as well as a plunge pool.

BUILDING 1



BUILDING 2



BUILDING 3



BUILDING 4



This is not intended to be an offer, or a solicitation of offers, to buy real estate or any other tangible asset in Punta Mita by residents of any jurisdiction where prohibited by law or where the project is not registered for sale as required by applicable law. Planned development, including but not limiting to pricing, specifications and amenities is subject to change or modifications without further notice. All renderings are intended to be graphic representations for illustrative purposes only, and final finishing and design plans are subject to change. The names "Punta Mita" and "DINE" as well as their logos are Registered Trademarks of Cantiles de Mita, S.A. de C.V. and DINE S.A.B. de C.V. respectively, and may not be used by third parties without the prior written consent of their owners.

| BUILDING 1 | |
|-------------------|-----------------|
| 101 | RESERVED |
| 102 | \$2,950,000 |
| 103 | SOLD |

| BUILDING 2 | |
|-------------------|-------------|
| 201 | SOLD |
| 202 | \$2,950,000 |
| 203 | SOLD |

| BUILDING 3 | |
|-------------------|-------------|
| 301 | SOLD |
| 302 | SOLD |
| 303 | \$2,700,000 |
| 304 | SOLD |
| 305 | \$2,950,000 |
| 306 | \$2,950,000 |

| BUILDING 4 | |
|-------------------|-----------------|
| 401 | SOLD |
| 402 | SOLD |
| 403 | RESERVED |
| 404 | \$2,700,000 |
| 405 | SOLD |
| 406 | SOLD |

financing payment terms

- 10% deposit upon reservation (non-refundable one reservation period ends)
- 30% due at closing (30 days from termination of reservation period)
- 30% due at rooftop completion
- 30% (minus \$100,000 USD due upon delivery notice)
- \$100,000 USD due upon satisfaction of punch list

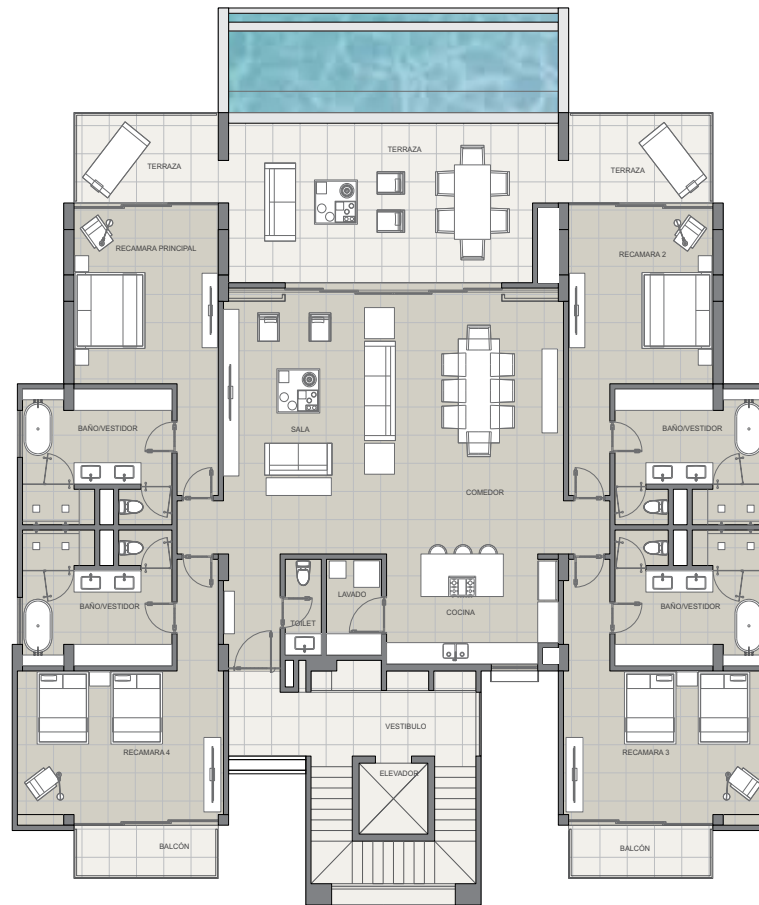
additional discounts

- Punta Mita owner discount: 5% price discount



*View from the Pacific Ocean Renderings are intended to be graphic representations for illustrative purposes only, and final finishing and design plans are subject to change.

BUILDING 1 & 2



INTERIOR AREA: 308 m²

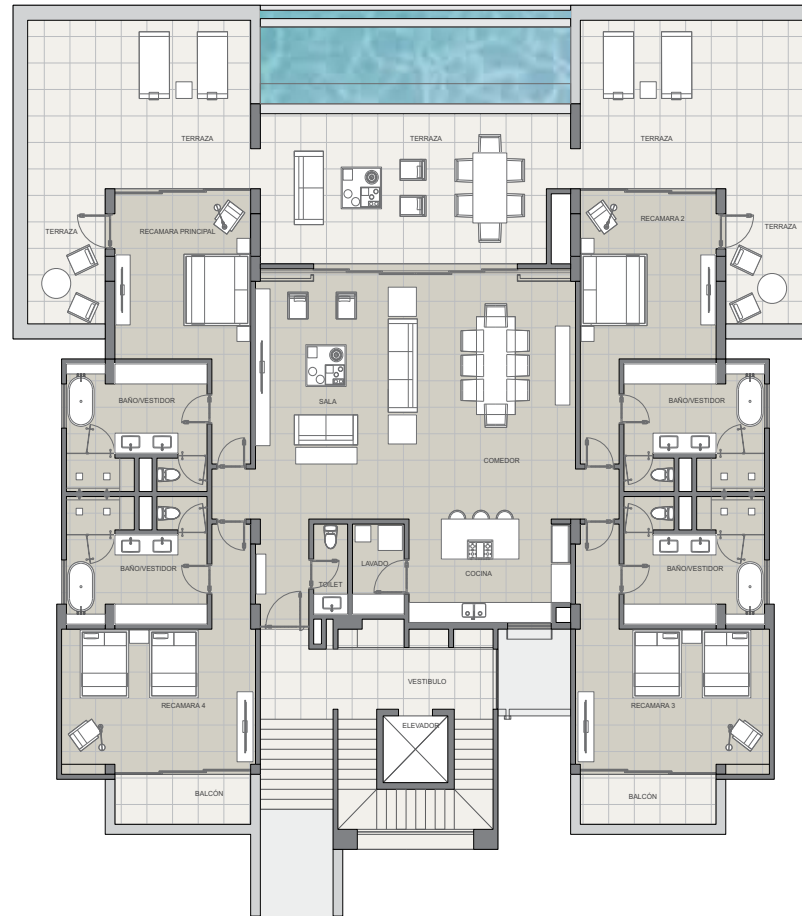
EXTERIOR AREA: 83 m²

POOL: 28 m²

TOTAL AREA: 419 m²

Preliminary project subject to change without notice, images are merely informative, therefore they do not represent any manifestation whatsoever of how project will be or will be finished, as it is merely a project and, in any case, it only corresponds to the project's first phase.

BUILDING 1 & 2 | GROUND FLOOR



INTERIOR AREA: 308 m²

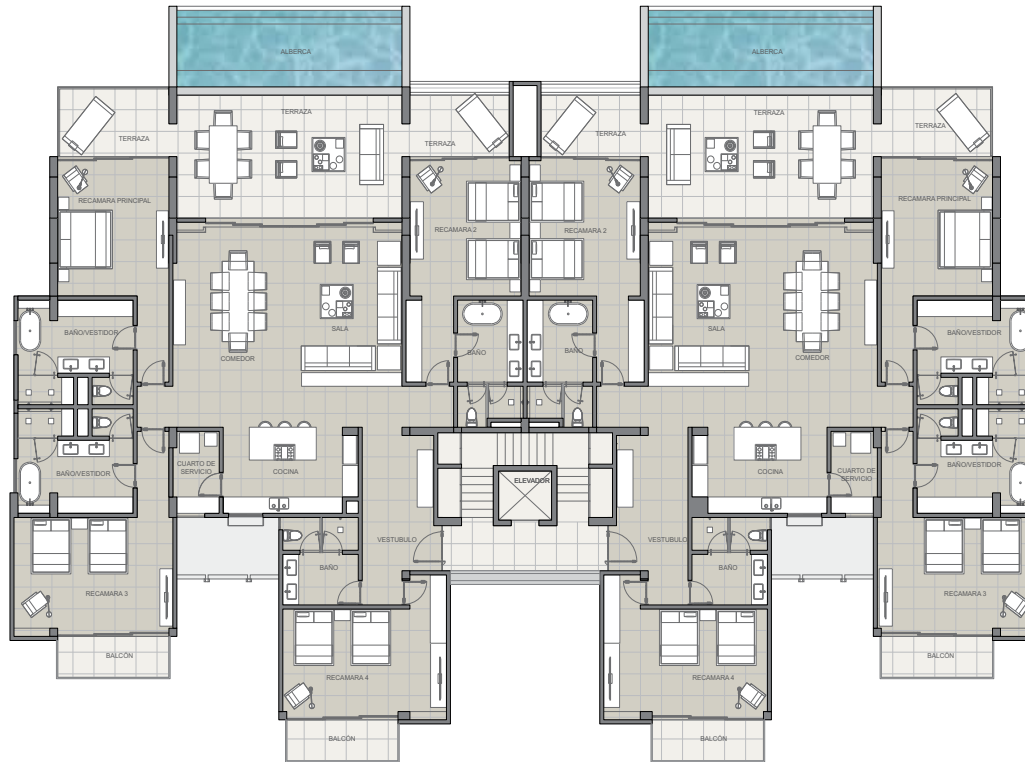
EXTERIOR AREA: 173 m²

POOL: 28 m²

TOTAL AREA: 509 m²

Preliminary project subject to change without notice, images are merely informative, therefore they do not represent any manifestation whatsoever of how project will be or will be finished, as it is merely a project and, in any case, it only corresponds to the project's first phase.

BUILDING 3 & 4



INTERIOR AREA: 293 m²

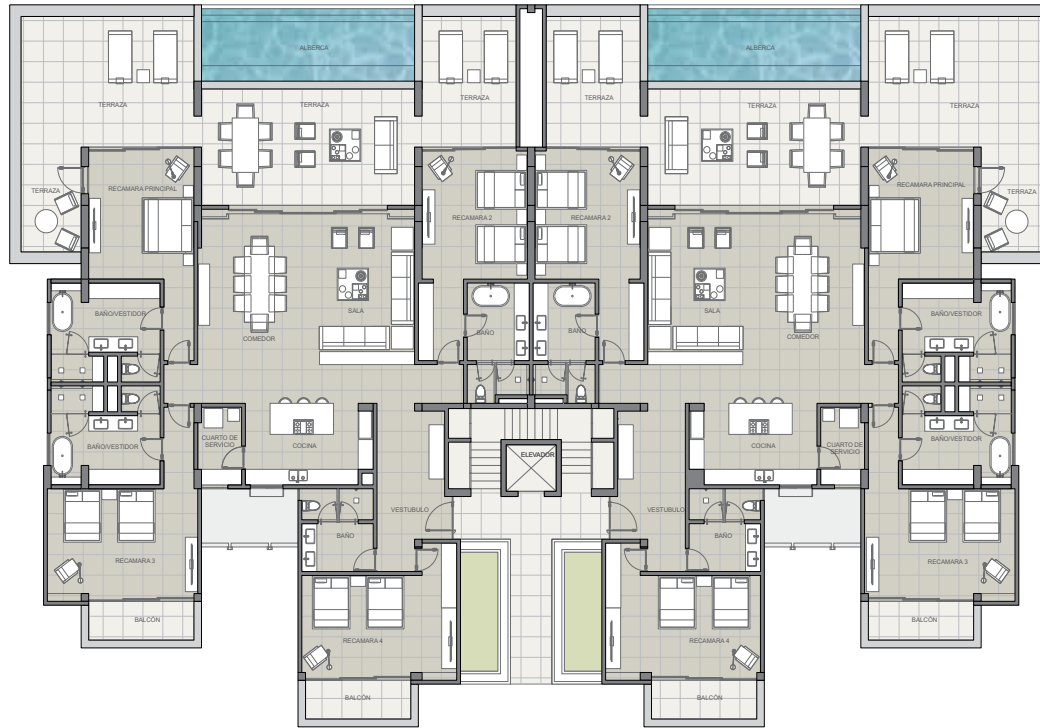
EXTERIOR AREA: 77 m²

POOL: 25 m²

TOTAL AREA: 395 m²

Preliminary project subject to change without notice, images are merely informative, therefore they do not represent any manifestation whatsoever of how project will be or will be finished, as it is merely a project and, in any case, it only corresponds to the project's first phase.

BUILDING 3 & 4 | GROUND FLOOR



INTERIOR AREA: 293 m²

EXTERIOR AREA: 135 m²

POOL: 25 m²

TOTAL AREA: 453 m²

Preliminary project subject to change without notice, images are merely informative, therefore they do not represent any manifestation whatsoever of how project will be or will be finished, as it is merely a project and, in any case, it only corresponds to the project's first phase.



AV. DE LAS REDES S/N, PUNTA DE MITA, NAYARIT 63734, MÉXICO
TEL : 329.291.5442 / 329.291.5402
INFO@RIVIERAPARTNERSREALTY.COM • WWW.RIVIERAPARTNERSREALTY.COM

