



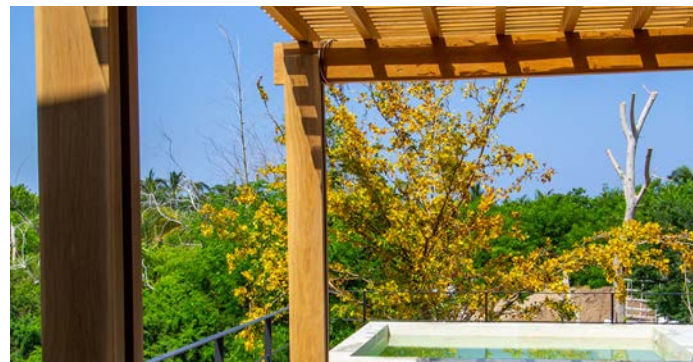
## RESERVA • CASA 1

VILLA • PUNTA MITA

RESERVA, a 5 acre enclave for six homes in the most central location - ONE OF THE MOST COVETED COMMUNITIES INSIDE PUNTA MITA- Hacienda de Mita with its own private beach club and access to great town surf spots, restaurants and shops! This is your last opportunity to purchase a new property in this private sub-division! RESERVA. Reserve your dream home today!

### Features of RESERVA

- The large lots provide a truly estate style layout, detached casitas, service quarters, water features, and room for multiple families.
- A large natural common area for the 6 homes (one acre) creates a buffer between the homes and the golf course providing unique privacy to residents and another location to enjoy.
- The most central location in Punta Mita
  - This is one of the main attributes
  - Proximity to golf, beach clubs, town, cafés restaurants, bike access, walking distance, etc.
- Great views of Pacifico #7 of golf hole, the ocean, and the naturally landscaped environment
- Mexican contemporary beach architecture – by Federico Rivera Rio
- A boutique developer that can deliver a customized experience for every client
- Flexibility of a proven concept - Las Terrazas
- Common area potential private pool with entertainment area and Pergola providing privacy to the homes (final design subject to approval)
- Natural endemic Landscaping



6 BEDROOMS • 7 BATHROOMS  
+ CASITA  
TOTAL CONSTRUCTION AREA: 12,407 (SQ FT) OR 1,153 (M2)  
AC AREA: 4,783 (SQ FT) OR 444 (M2)  
PRIVATE POOL  
GOLF COURSE & PARTIAL OCEAN VIEW

**SALE PRICE:**  
**USD \$3,200,000**




AV. DE LAS REDES S/N, PUNTA DE MITA, NAYARIT 63734, MÉXICO  
TEL : +52 329.291.5442 / +52 329.291. 5402  
INFO@RIVIERAPARTNERSREALTY.COM • WWW.RIVIERAPARTNERSREALTY.COM










**RESERVA**  
HACIENDA DE MITA

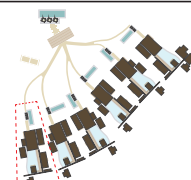
**CASA 01**  
**GROUND LEVEL**





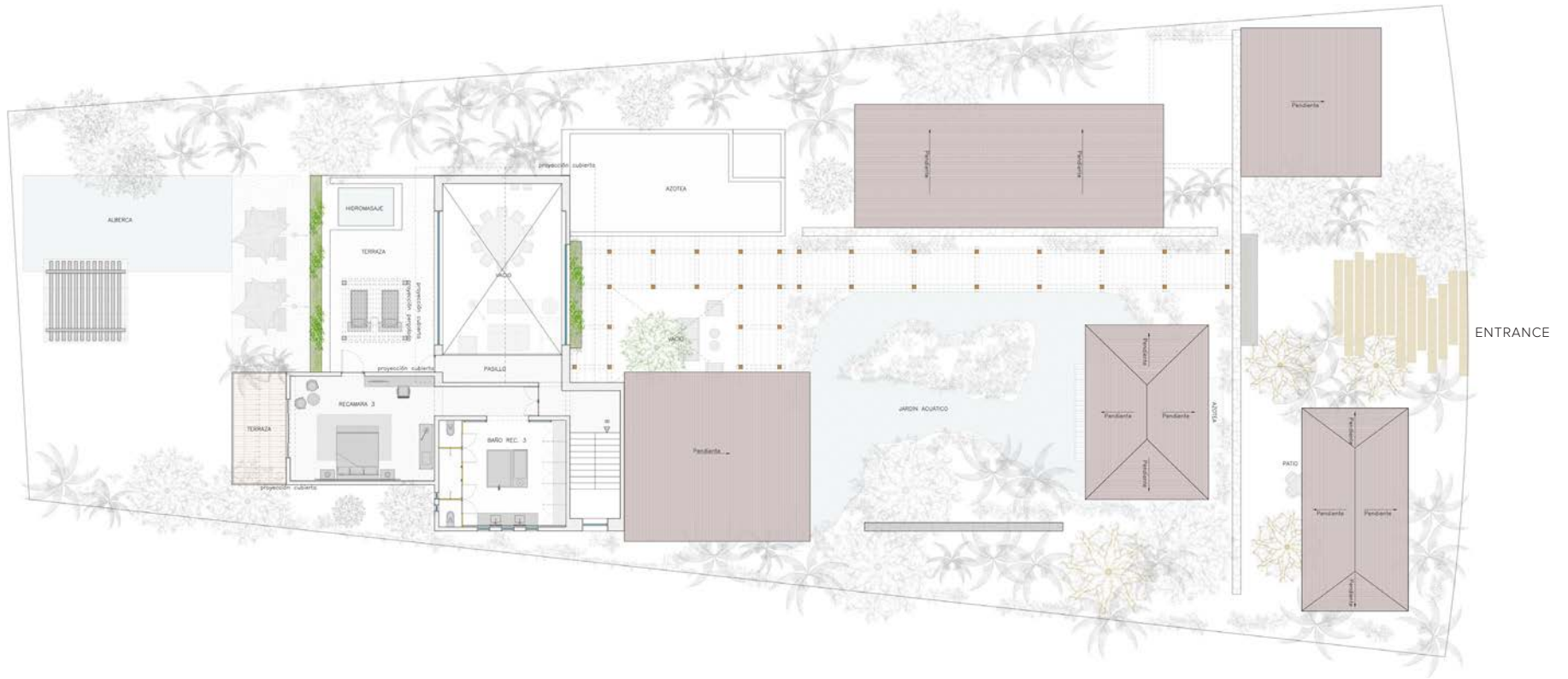
*Approximate measurements  
Info subject o change without notice*


Approximate Areas	Square meters	Square Feet
LOT	2,000 sm	0,5 acres
CONSTRUCTED	1,153 sm	12,407 sf
A/C AREA	444 sm	4,783 sf

Key




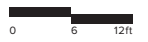







**RESERVA**  
HACIENDA DE MITA

**CASA 01**  
**UPPER LEVEL**

Approximate measurements  
Info subject o change without notice

Approximate Areas	Square meters	Square Feet
LOT	2,000 sm	0,5 acres
CONSTRUCTED	1,153 sm	12,407 sf
A/C AREA	444 sm	4,783 sf

**Key**

